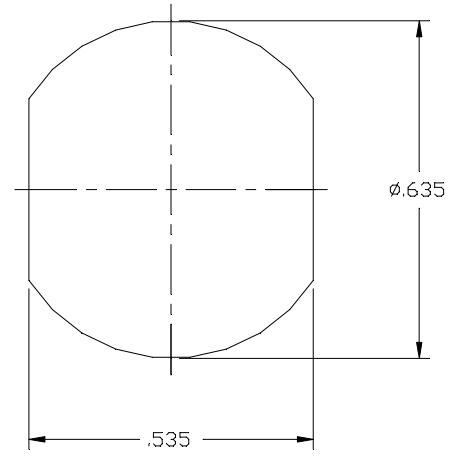
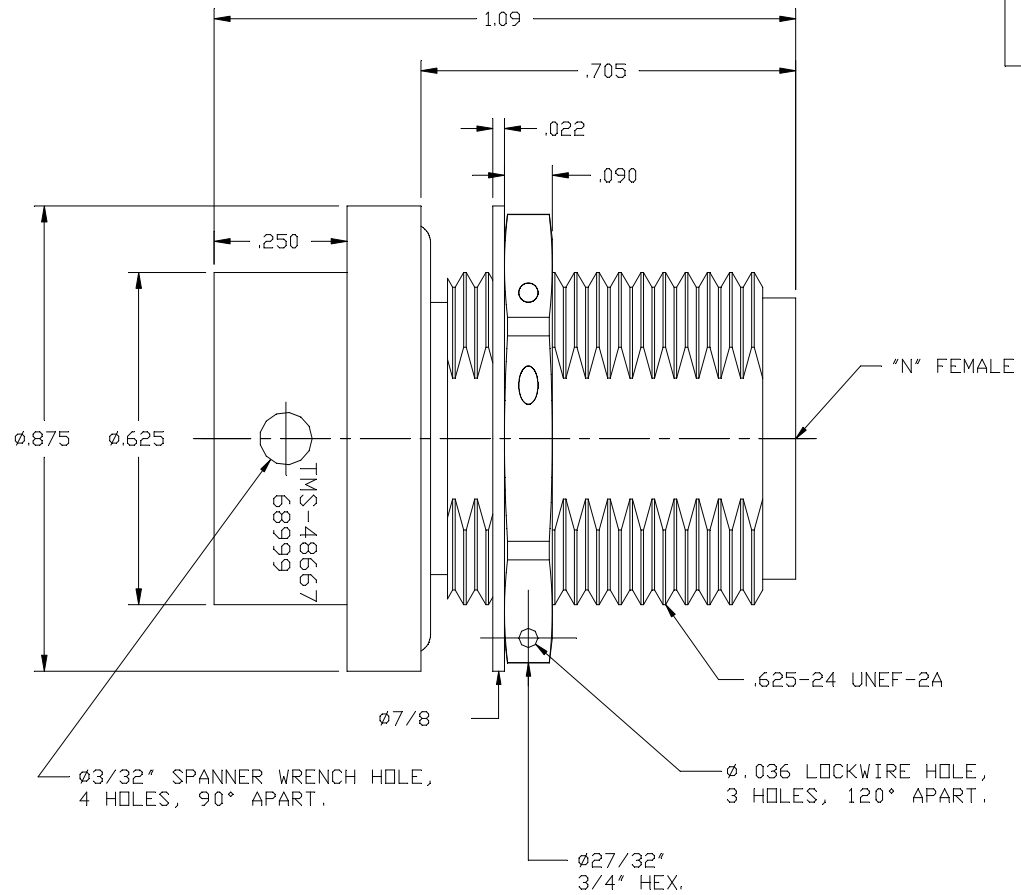


SD48667	SYM	REVISION DESCRIPTION	DFTM	DATE	APPD	DATE
	A	RELEASED FOR PRODUCTION				



RECOMMENDED MOUNTING HOLE DIMENSIONS

DRAFTSMAN	<i>John D. Bloomfield</i>	2/18/97
CHECKER		
APPROVED		

TIMES MICROWAVE SYSTEMS

TITLE:
REPLACEABLE FRONT END
"N" FEMALE BULKHEAD

UNLESS OTHERWISE SPECIFIED
ALL DIMENSIONS ARE IN INCHES
MACHINED SURFACES FINISH N/A RMS MAX.
REMOVE ALL BURRS .005 MAX. BREAK
MACHINE CORNERS .005 MAX. FILLET R.
TOLERANCES ON DECIMALS
.XX ± .03 .XXX ± .005
ANGLES ± 1° FRACTIONS ± 1/32

DWG. SIZE	B	DRWG. NO.	SD48667	REV.	A
CODE IDENT.	68999	SCALE:	NONE	SHEET:	1 of 1

011789
W.D. NUMBER
MATERIAL:
SEE TABLE

DIELECTRICS	TEFLON, ASTM D1457	NONE
JAM NUT	STAINLESS STEEL, ASTM A582	PASSIVATE, QQ-P-35
BODY	STAINLESS STEEL, ASTM A582	PASSIVATE, QQ-P-35
CONTACTS	BERYLLIUM COPPER, QQ-C-530	GOLD PLATE, MIL-G-45204
PART NAME	MATERIAL & SPEC. NUMBER	FINISH & SPEC. NUMBER