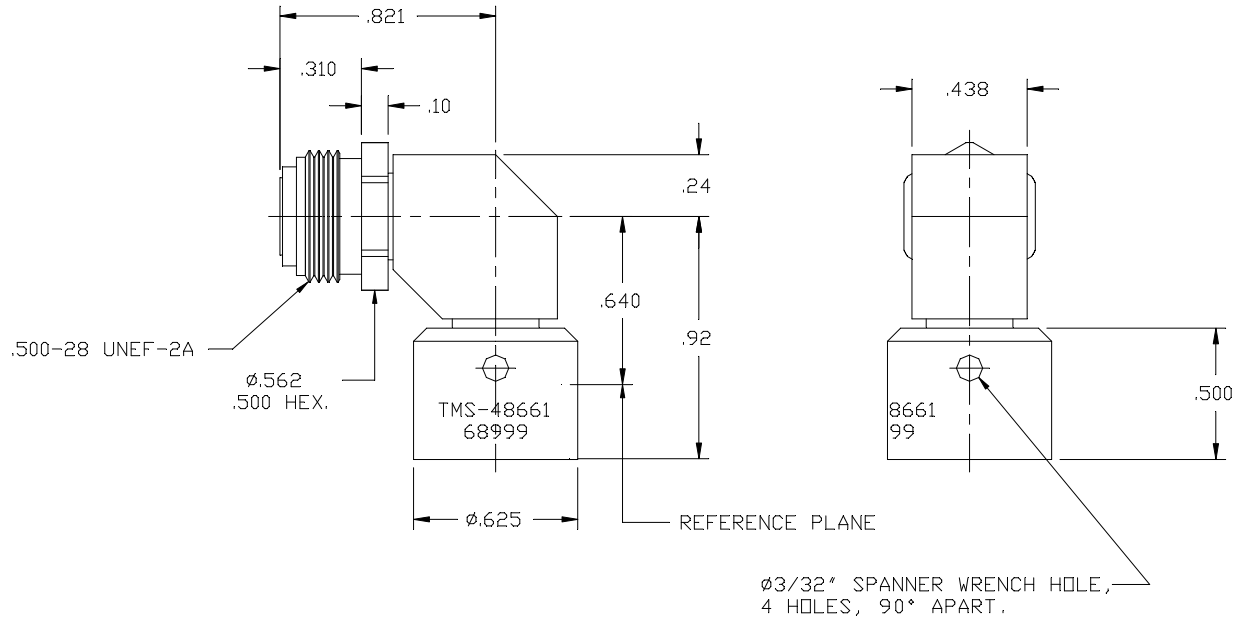


SD48661

| SYM | REVISION DESCRIPTION | DFTM | DATE | APPD | DATE |
|-----|-------------------------|------|------|------|------|
| A | RELEASED FOR PRODUCTION | | | | |



| PART NAME | MATERIAL & SPEC. NUMBER | FINISH & SPEC. NUMBER |
|---------------|----------------------------|-------------------------|
| DIELECTRICS | TEFLON, ASTM D1457 | NONE |
| COUPLING NUTS | STAINLESS STEEL, ASTM A582 | PASSIVATE, QQ-P-35 |
| BODIES | STAINLESS STEEL, ASTM A582 | PASSIVATE, QQ-P-35 |
| CONTACTS | BERYLLIUM COPPER, QQ-C-530 | GOLD PLATE, MIL-G-45204 |

| |
|-------------|
| 011777 |
| W.D. NUMBER |
| MATERIAL: |
| SEE TABLE |

| | | |
|---------------------------------------|---------------------------|----------|
| DRAFTSMAN | <i>John D. Bloomfield</i> | 11/11/96 |
| CHECKER | | |
| APPROVED | | |
| UNLESS OTHERWISE SPECIFIED | | |
| ALL DIMENSIONS ARE IN INCHES | | |
| MACHINED SURFACES FINISH N/A RMS MAX. | | |
| REMOVE ALL BURRS .005 MAX. BREAK | | |
| MACHINE CORNERS .005 MAX. FILLET R. | | |
| TOLERANCES ON DECIMALS | | |
| .XX ± .03 | .XXX ± .005 | |
| ANGLES ± 1° | FRACTIONS ± 1/32 | |
| DO NOT SCALE DRAWING | | |

| | | |
|---|----------|---------------|
| TIMES MICROWAVE SYSTEMS | | |
| TITLE: | | |
| REPLACEABLE FRONT END 90° INTERMEDIATE ADJUSTABLE FRONT END ORIENTATION | | |
| DWG. SIZE | B | REV. A |
| DRWG. NO. | SD48661 | |
| CODE IDENT. | 68999 | |
| SCALE: | NONE | SHEET: 1 of 1 |