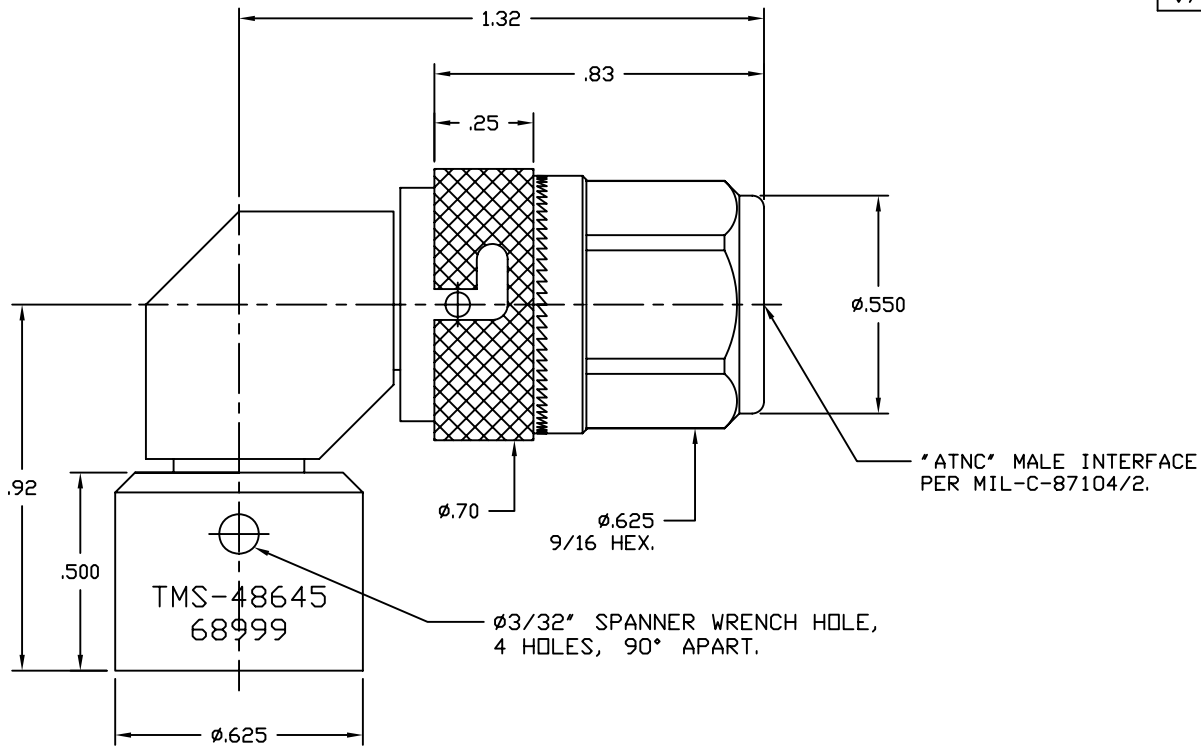


SD48645

SYM	REVISION DESCRIPTION	DFTM	DATE	APPD	DATE
A	RELEASED FOR PRODUCTION	J.D.B.	2/13/96	J.D.B.	2/13/96
B	CHANGED PER CDC #18951	J.D.B.	3/27/97	J.D.B.	4/9/97
C	CHANGED PER CDC#23692	S.A.S.	10/11/04	J.D.B.	11/15/06



DRAFTSMAN	John D. Bloomfield	2/13/96
CHECKER	John D. Bloomfield	2/13/96
APPROVED	John D. Bloomfield	2/13/96

UNLESS OTHERWISE SPECIFIED  
 ALL DIMENSIONS ARE IN INCHES  
 MACHINED SURFACES FINISH N/A RMS MAX.  
 REMOVE ALL BURRS .005 MAX. BREAK  
 MACHINE CORNERS .005 MAX. FILLET R.  
 TOLERANCES ON DECIMALS  
 .XX ± .03 .XXX ± .005  
 ANGLES ± 1° FRACTIONS ± 1/32  
 DO NOT SCALE DRAWING

<b>TIMES MICROWAVE SYSTEMS</b>		
TITLE: REPLACEABLE FRONT END 90° "ATNC" MALE WITH LOCKING COUPLING NUT		
DWG. SIZE	<b>B</b>	DRWG. NO. SD48645
CODE IDENT. 68999	SCALE: NONE	SHEET: 1 of 1

011747  
 W.O. NUMBER  
 MATERIAL:  
 SEE TABLE

PART NAME	MATERIAL & SPEC. NUMBER	FINISH & SPEC. NUMBER
DIELECTRICS	TEFLON, ASTM D1710	NONE
COUPLING NUT	STAINLESS STEEL, ASTM A582	PASSIVATE, QQ-P-35
BODY	STAINLESS STEEL, ASTM A582	PASSIVATE, QQ-P-35
CONTACTS	BERYLLIUM COPPER, QQ-C-530	GOLD PLATE, MIL-G-45204