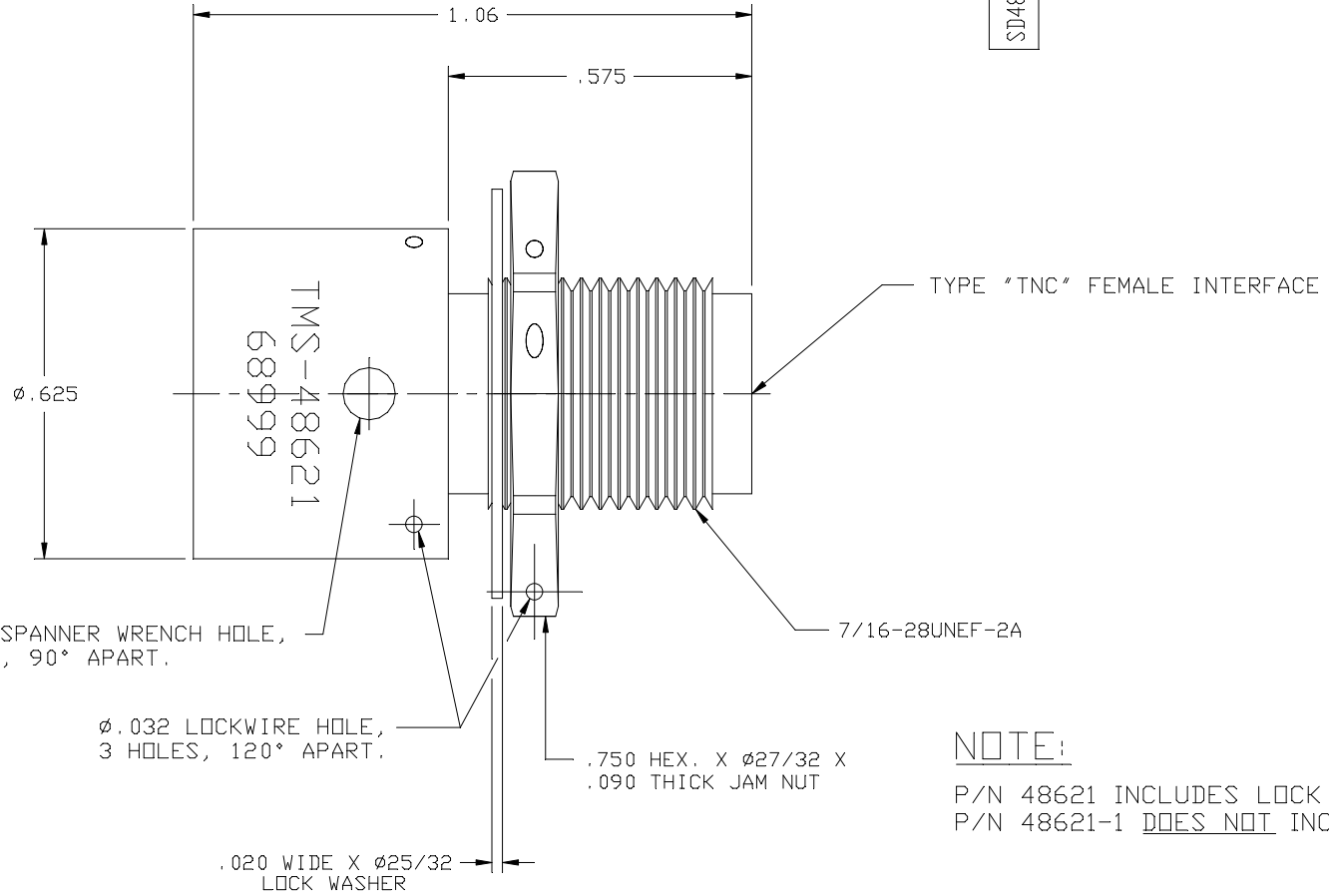


SD48621-SEE TAB

SYM	REVISION DESCRIPTION	DFTM	DATE	APPD	DATE
A	RELEASED FOR PRODUCTION	J.D.B.	11/10/94	J.D.B.	11/10/94
B	CHANGED PER CDC 19347	J.D.B.	5/22/98		



NOTE:

P/N 48621 INCLUDES LOCK WASHER & JAM NUT.
P/N 48621-1 DOES NOT INCLUDE LOCK WASHER & JAM NUT.

PART NAME	MATERIAL & SPEC. NUMBER	FINISH & SPEC. NUMBER
DIELECTRICS	TEFLON, ASTM D1457	NONE
LOCK WASHER	STAINLESS STEEL, QQ-S-763	PASSIVATE, ASTM A380
JAM NUT	STAINLESS STEEL, ASTM A582	PASSIVATE, ASTM A380
BODY	STAINLESS STEEL, ASTM A582	PASSIVATE, ASTM A380
CONTACT	BERYLLIUM COPPER, QQ-B-530	GOLD PLATE, MIL-G-45204

011696
W.O. NUMBER
MATERIAL :
SEE TABLE

DRAFTSMAN	John D. Bloomfield	11/10/94
CHECKER	John D. Bloomfield	11/10/94
APPROVED	John D. Bloomfield	11/10/94

UNLESS OTHERWISE SPECIFIED
ALL DIMENSIONS ARE IN INCHES
MACHINED SURFACES FINISH N/A RMS MAX.
REMOVE ALL BURRS .005 MAX. BREAK
MACHINE CORNERS .005 MAX. FILLET R.
TOLERANCES ON DECIMALS
.XX ± .01 .XXX ± .005
ANGLES ± 1° FRACTIONS ± 1/32
DO NOT SCALE DRAWING

TIMES MICROWAVE SYSTEMS		
TITLE: REPLACEABLE FRONT END "TNC" FEMALE BULKHEAD		
DWG. SIZE B	DRWG. NO. SD48621-SEE TAB	REV. B
CODE IDENT. 68999	SCALE: NONE	SHEET: 1 of 1