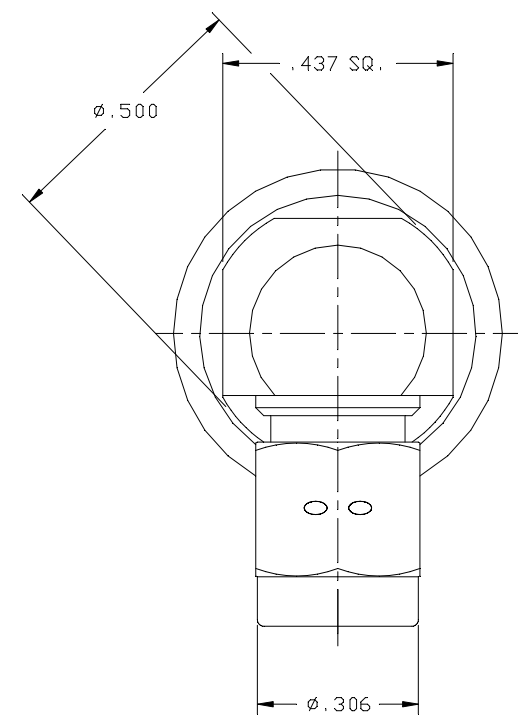
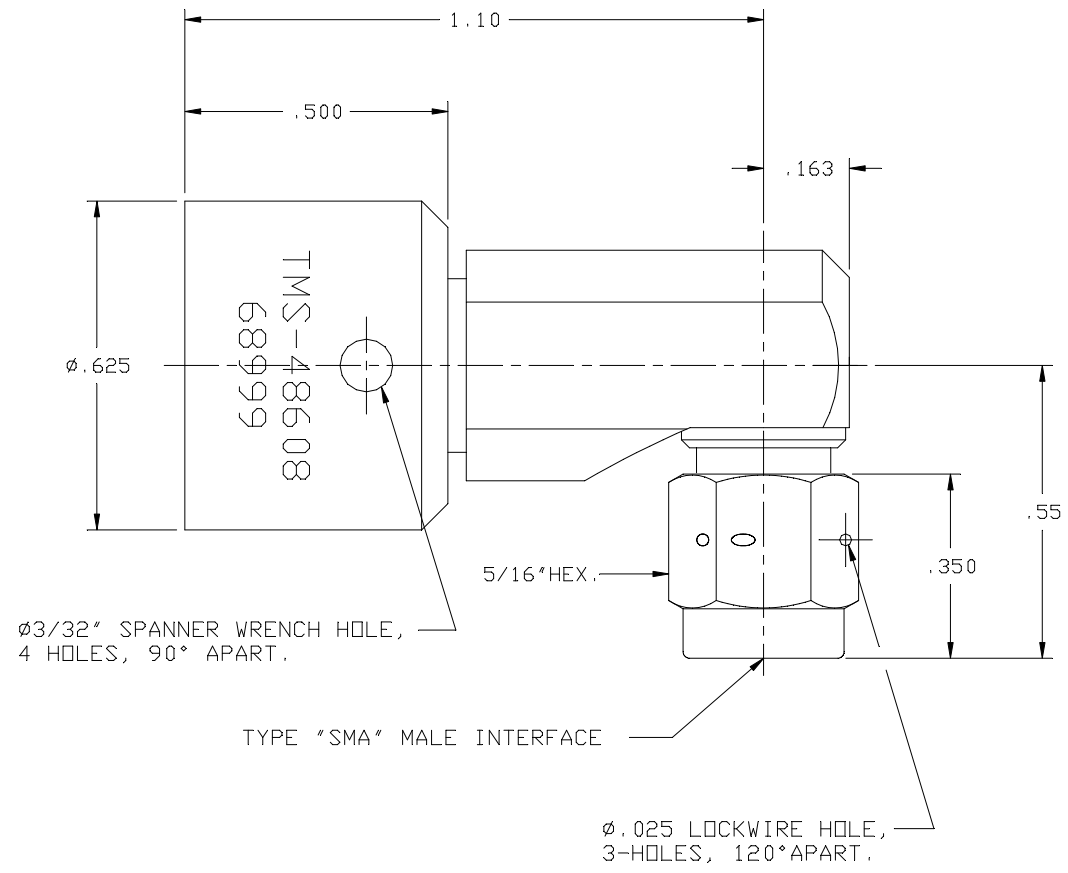


SD48608	SYM	REVISION DESCRIPTION	DFTM	DATE	APPD	DATE
	A	RELEASED FOR PRODUCTION				



DIELECTRICS	TEFLON, ASTM D1457	NONE
COUPLING NUTS	STAINLESS STEEL, ASTM A582	PASSIVATE, ASTM A380
BODY	STAINLESS STEEL, ASTM A582	PASSIVATE, ASTM A380
CONTACTS	BERYLLIUM COPPER, QQ-B-530	GOLD PLATE, MIL-G-45204
PART NAME	MATERIAL & SPEC. NUMBER	FINISH & SPEC. NUMBER

011642
 W.O. NUMBER
 MATERIAL :
 SEE TABLE

DRAFTSMAN	<i>John D. Bloomfield</i>	1/6/94
CHECKER		
APPROVED		
UNLESS OTHERWISE SPECIFIED		
ALL DIMENSIONS ARE IN INCHES		
MACHINED SURFACES FINISH N/A RMS MAX.		
REMOVE ALL BURRS .005 MAX. BREAK		
MACHINE CORNERS .005 MAX. FILLET R.		
TOLERANCES ON DECIMALS		
.XX ± .03 .XXX ± .005		
ANGLES ± 1° FRACTIONS ± 1/32		
DO NOT SCALE DRAWING		

TIMES MICROWAVE SYSTEMS		
TITLE: REPLACEABLE FRONT END 90° "SMA" MALE		
DWG. SIZE	B	REV. A
DRWG. NO.	SD48608	
CODE IDENT.	68999	SHEET: 1 of 1
SCALE:	NONE	