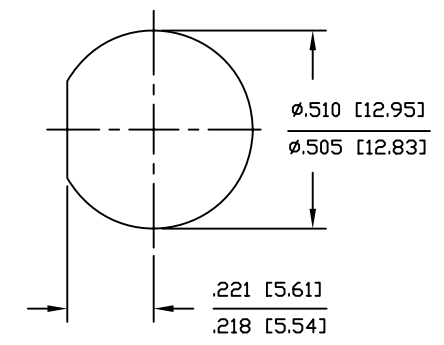


SYM	REVISION DESCRIPTION	DFTM	DATE	APPD	DATE
A	RELEASED FOR PRODUCTION	R.W.H.	3/19/92	J.D.B.	4/3/92
B	CHANGED PER CDC #17170	J.D.B.	4/20/94	J.D.B.	4/20/94
C	CHANGED PER CDC #17254	J.D.B.	10/4/94	J.D.B.	10/4/94
D	CHANGED PER CDC #23692	S.A.S.	10/11/04	J.D.B.	11/15/06



RECOMMENDED MOUNTING HOLE

PARTS	MATERIAL	FINISH
CONTACTS	BERYLLIUM COPPER PER QQ-C-530	WOODS NICKEL UNDERPLATE GOLD PLATE, MIL-G-45204
BODIES AND JAM NUT	STAINLESS STEEL PER ASTM A582	PASSIVATE, ASTM A380
DIELECTRICS	TEFLON, ASTM D1710	

NOTE: REF. DWGS. DC1132, DC1133 & DC1134

MATERIAL: LISTED ABOVE	W. O. #011571
	USED ON ASSY.

DRAFTSMAN	Russell W. Holmes	3/30/92
CHECKER	Jon A. Lutzger	3/31/92
APPROVED	John D. Bloomfield	4/3/92
UNLESS OTHERWISE SPECIFIED		
MACHINED SURFACES FINISH N/ARMS MAX. REMOVE ALL BURRS .005 MAX. BREAK MACHINE CORNERS .005 MAX. FILLET R. TOLERANCES ON DECIMALS		
.XX ± .030 .XXX ± .005		
ANGLES ± 1° FRACTIONS ± 1/32		
DO NOT SCALE DRAWING		

TIMES MICROWAVE SYSTEMS		
TITLE: REPLACEABLE CONNECTOR "ATNC" FEMALE BULKHEAD		
CODE IDENT. 68999	DRWG. NO. SD48590	REV. D
SCALE: 4X	SHEET: 1 of 1	