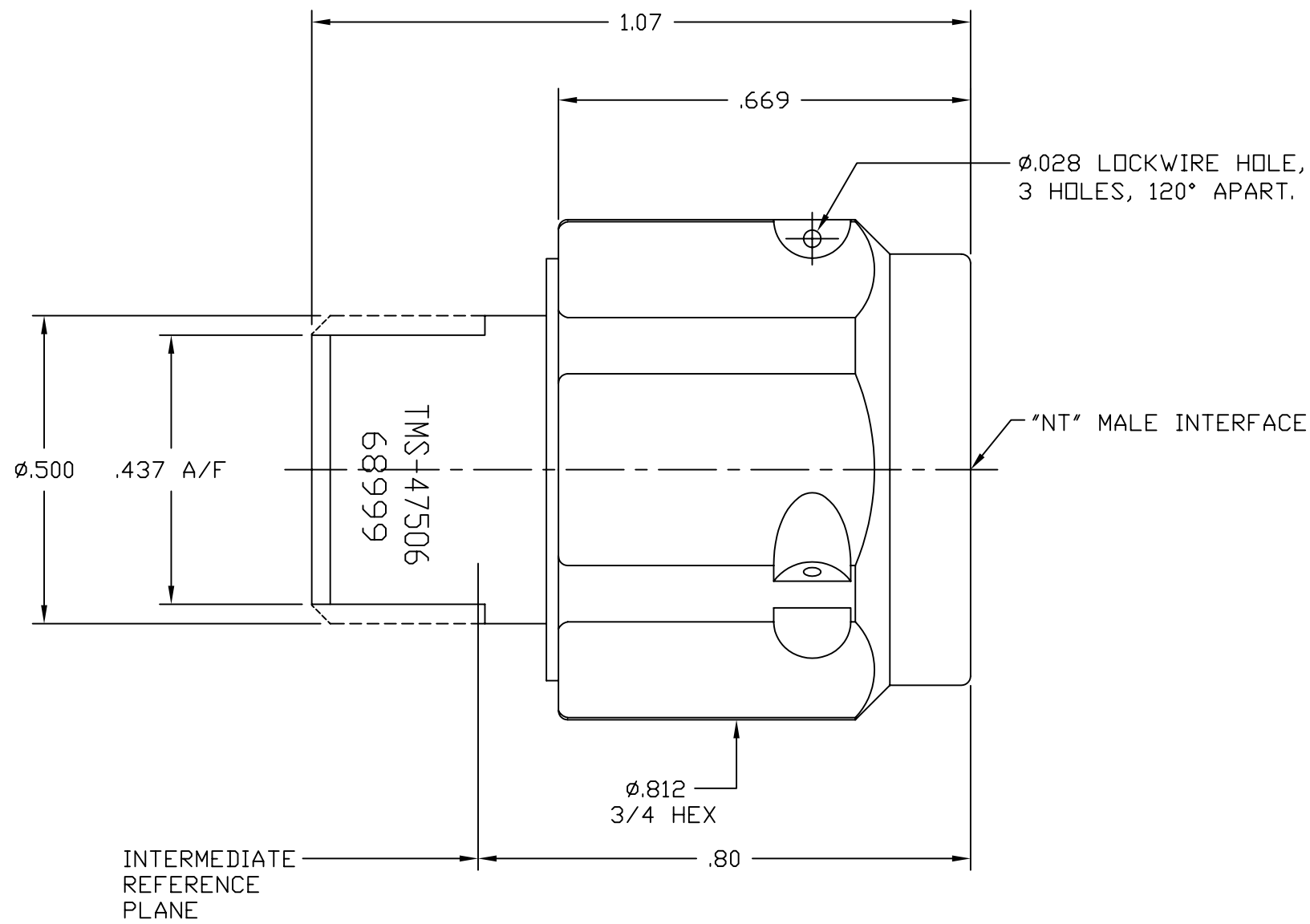


NOTICE OF PROPRIETARY RIGHTS
 THIS DOCUMENT CONTAINS CONFIDENTIAL TECHNICAL DATA, INCLUDING TRADE SECRETS, PROPRIETARY TO TIMES MICROWAVE SYSTEMS. DISCLOSURE OF THIS DATA IS EXPRESSLY CONDITIONED UPON YOUR ASSENT THAT ITS USE IS LIMITED TO USE WITHIN YOUR COMPANY ONLY. ANY OTHER USE IS STRICTLY PROHIBITED WITHOUT THE PRIOR WRITTEN CONSENT OF TIMES MICROWAVE SYSTEMS.

SD47506	SYM	REVISION DESCRIPTION	DFTM	DATE	APPD	DATE
	A	RELEASED FOR PRODUCTION	D.R.W.	4/13/06	J.D.B.	4/21/06



DIELECTRICS	TEFLON, ASTM D1457	NONE
COUPLING NUT	STAINLESS STEEL, ASTM A582	PASSIVATE, QQ-P-35
BODY	BERYLLIUM COPPER, ASTM B196	GOLD PLATE, MIL-G-45204
CONTACTS	BERYLLIUM COPPER, ASTM B196	GOLD PLATE, MIL-G-45204
PART NAME	MATERIAL & SPEC. NUMBER FINISH & SPEC. NUMBER	

012542
W.D. NUMBER
MATERIAL: SEE TABLE

DRAFTSMAN	Daniel R. Whitaker	4/13/06
CHECKER	John D. Bloomfield	4/21/06
APPROVED	John D. Bloomfield	4/21/06

UNLESS OTHERWISE SPECIFIED
 ALL DIMENSIONS ARE IN INCHES
 MACHINED SURFACES FINISH N/A RMS MAX.
 REMOVE ALL BURRS .005 MAX. BREAK
 MACHINE CORNERS .005 MAX. FILLET R.
 TOLERANCES ON DECIMALS
 .XX ± .03 .XXX ± .005
 ANGLES ± 1° FRACTIONS ± 1/32

DO NOT SCALE DRAWING

TIMES MICROWAVE SYSTEMS		
TITLE: REPLACEABLE FRONT END -137 "NT" MALE WITH SLOTTED OUTER CONTACT AND LOCKWIRE HOLES		
DWG. SIZE	DRWG. NO.	REV.
B	SD47506	A
CODE IDENT. 68999	SCALE: NONE	SHEET: 1 of 1